

TIFFIN

2026

CLASS A

ALLEGRO BUS



WHAT'S NEW

- Tiffin PowerDrive Steering Assist Column
- Added Mobileye
- Optional 605hp Available
- New Exterior Paint - Gen 13 & 15
- Multiplex Over-The-Air Updates
- Black Wheel Option
- Optional Pet Perks Plus Package:
 - Pet Leash Holder at Entry Door
 - Pull Out Pet Dish Holder
 - Pet Monitoring Camera
- New Galley Faucet
- New Interior Decor Packages
 - Pacifica - Omnia - Taos
- (2) Manual Trays or (2) Power Trays in Basement Slide Outs
- Swivel Mount for Exterior TV
- Two-Tone Cabinet Option with White Linen Upper Cabinets
- Sandstone Cabinet Stain Option
- New Dash Design
- Gallery Window Package (Front Windows Only)
- Notification Added to Spyder Main Touch Panel to Indicate When A/C Override Is Enabled
- Power Bathroom Shade Operates Independent From Master
- Electrical Outlet in U-Shaped Booth Dinette
- New Matte Black Plumbing Fixtures, Towel Bars, and Cabinet Hardware
- Prep For Satellite Internet (In Addition to Standard Starlink Pro) at waterboard
- New Wallboard, Furniture Coverings, and Tile Floor Designs
- Wexco Windshield Wipers

No Longer Available

- 45 FP and 35 CP Floor Plans
- Generation 14 Paint Scheme

YOU'RE IN CONTROL WITH

POWER DRIVE

DRIVER COMFORT, COACH CONFIDENCE

- Steering automatically returns to center, easing operation.
- Reduces driver fatigue
- Exclusive engineering ensures top-notch safety and comfort features, giving you the confidence to "Drive with Power."

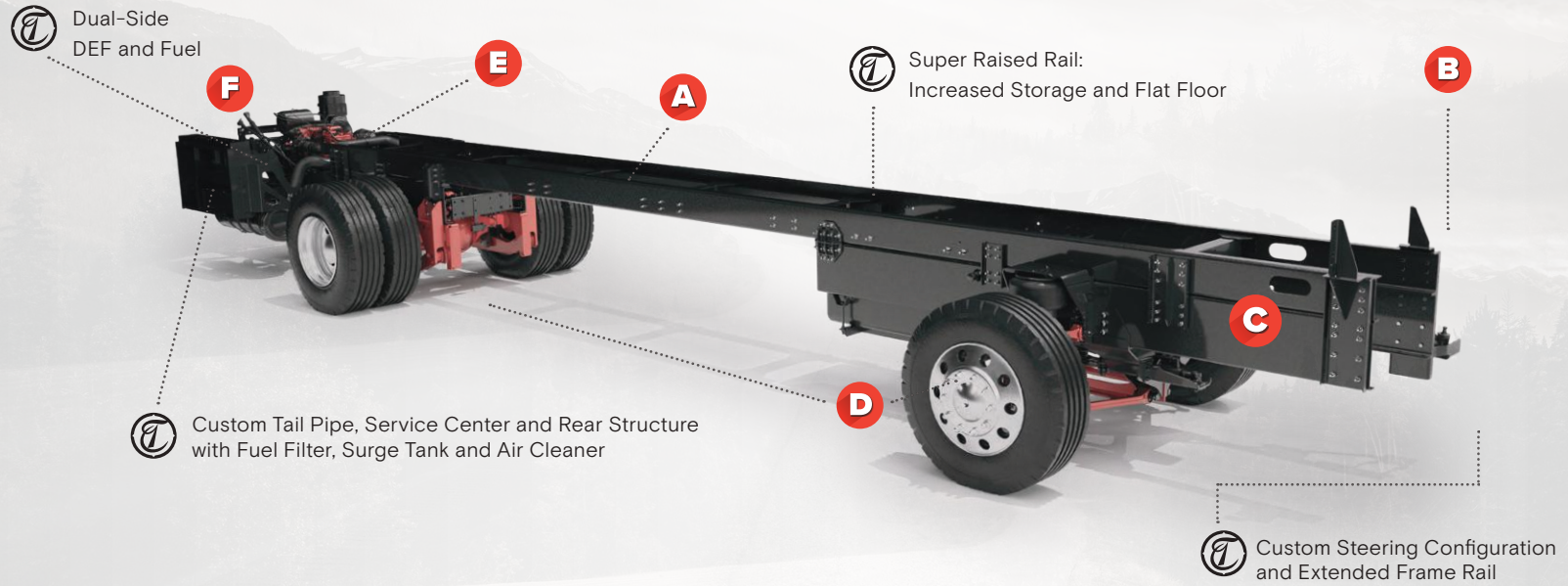


SAFETY FEATURES

- Enhanced drivability and maneuverability
- Road crowning and crosswind compensation for safer operation at highway speeds
- Better handling and directional control in any adverse road conditions (potholes, bumps, etc.)

TIFFIN POWERGLIDE XC

CHASSIS WALKAROUND



F Dual-Side DEF and Fuel

B Super Raised Rail: Increased Storage and Flat Floor

F Custom Tail Pipe, Service Center and Rear Structure with Fuel Filter, Surge Tank and Air Cleaner

C Custom Steering Configuration and Extended Frame Rail

A **V-RIDE** ENHANCED ROLL STABILITY AND RIDE WITH INCREASED CAPACITY FOR CARGO

C **IFS** PREMIUM COACH-LIKE FEEL AND MANEUVERABILITY

F MOST RELIABLE ENGINE & TRANSMISSION ON THE MARKET

450 HP Cummins L9

Allison 3000 6-Speed

B AUTOMOTIVE-LIKE DRIVING EXPERIENCE WITH INTEGRATED SAFETY SYSTEMS

D **KONI** FINE-TUNED TO IMPROVE RIDE COMFORT

5 YEAR **100,000-MILE WARRANTY** INDUSTRY-LEADING WARRANTY FOR INCREASED CONFIDENCE

DRIVETECH

RoadWatch Features:
Collision Mitigation
Adaptive Cruise Control
Electronic Stability Control with Roll Stability Support
Automatic Traction Control

WITH **ROADWATCH**

OPTIVIEW

E **BRAKE SYNC** INTEGRATED AIR SUPPLY FOR TOW VEHICLE BRAKE SYSTEM

my 24/7 DIRECT

FACTORY-DIRECT SUPPORT FOR THE LIFE OF THE COACH

Premium Paint System

The eight-step full-body paint system features premium grade paints sealed with four layers of clear coat with ultraviolet protection. An additional layer of high-performance film protects the front of the coach and select areas.

Our Generation 13 and Generation 15 premium paint schemes give you 10 different ways to make your 2026 Allegro Bus your very own. To learn more, visit tiffinmotorhomes.com.

GENERATION 13



G13 CINDERWOOD



G13 ARCTIC SAPPHIRE



G13 FROSTED GRANITE



G13 WATERFALL



G13 WHITE MAHOGANY

GENERATION 15 NEW



G15 CINDERWOOD



G15 ARCTIC SAPPHIRE



G15 FROSTED GRANITE



G15 WATERFALL



G15 WHITE MAHOGANY

Images shown are representations of paint layouts only and do not reflect all exterior features or options. Colors shown may slightly differ from colors on actual product.

Floor Plans and Specifications

FLOOR PLAN	Overall Length (approx.) ¹	Wheel Base	Overall Width ¹	Overall Height	Minimum Garage Height	Interior Height	Interior Width	Basement Storage (cubic feet, approx.)	Square Footage (approx.) ²	GAWR-Front (pounds)	GAWR-Rear (pounds)	GAWR-Tag (pounds)	GVWR (pounds)	Maximum Trailer Weight (pounds) ⁴	Hitch Rating (pounds)	GCWR (pounds)
40 IP	41'	276"	101"	13' 3"	14'	83"	96"	229	405	17,000	24,000	-	41,000	10,000	10,000	51,000
45 OPP	45'	323"	101"	13' 3"	14'	83"	96"	257	440	18,000	23,000	11,000	52,000	15,000	15,000	67,000

¹ The approximated coach width and length does not include side-view mirrors and rear ladders.

² On tag axle coaches, measurement is taken from the center of the steer axle to the centerline between the drive and tag axle.

³ Square footage was calculated with the slide-outs fully extended.

⁴ Maximum trailer weight is dependent on the loading and towing variables which include the GVWR, GAWR, and GCWR, as well as adequate trailer brakes.



If optional furniture combinations are selected, window locations may vary from diagram shown. All options may not be available in every model. Because of progressive improvements and specifications, standard and optional equipment are subject to change without notice or obligation. For a complete and up-to-date list of available options and specifications, visit tiffinmotorhomes.com.

Interior Décor

Make your experience on the road all your own. Express yourself by choosing the interior appointments such as cabinet finishes, flooring, and décor ensembles for every part of your motorhome. In the 2026 Allegro Bus, you'll be able to travel in style no matter where your adventure takes you.



**MR. BOB TIFFIN RECOMMENDS
PACIFICA DÉCOR PACKAGE
WITH RICE WINE FURNITURE,
UNION INDUSTRIAL GRAY
FLOORING, AND WHITE LINEN
CABINETS.**

FLOORING



INDUSTRIAL GRAY
MATTE PORCELAIN TILE

NEW



TRACE CREME
MATTE PORCELAIN TILE

NEW



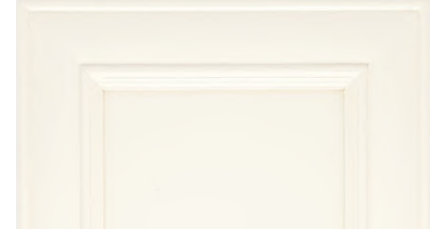
SAVOIR CAFE
POLISHED PORCELAIN TILE

NEW

CABINETS



GLAZED HONEY NATURAL CHERRY



WHITE LINEN



GLAZED CANYON CHERRY



BLACK TRUFFLE



SANDSTONE



PLATINUM

Images shown are representations of paint layouts only and do not reflect all exterior features or options. Colors shown may slightly differ from colors on actual product. Colors of interior décor options shown may vary from colors on actual product.

OMNIA **NEW**



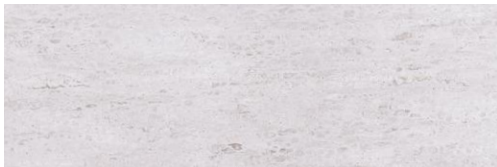
WINDOW TREATMENT



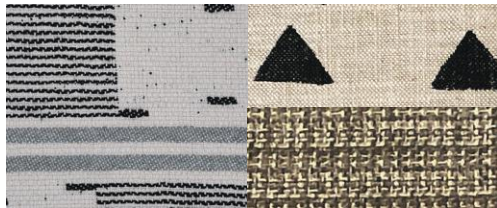
BAMBOO LIFESTYLE LEATHER



BACKSPLASH



COUNTERTOP

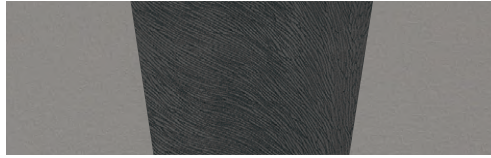


LIVING ROOM

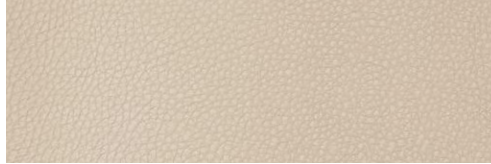


MASTER SUITE

PACIFICA **NEW**



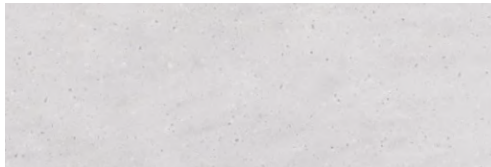
WINDOW TREATMENT



RICE WINE LIFESTYLE LEATHER



BACKSPLASH



COUNTERTOP



LIVING ROOM

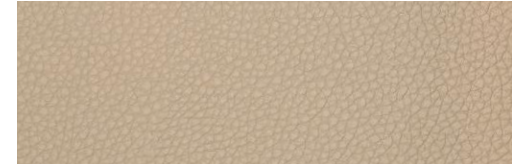


MASTER SUITE

TAOS **NEW**



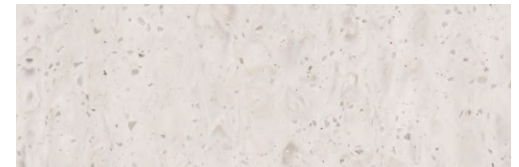
WINDOW TREATMENT



BAMBOO LIFESTYLE LEATHER



BACKSPLASH



COUNTERTOP



LIVING ROOM



MASTER SUITE

1

YEAR OR 12,000 MILES
LIMITED WARRANTY

3

YEAR DELAMINATION
LIMITED WARRANTY WITH
NO MILEAGE LIMITATION

5

YEAR CONSTRUCTION
LIMITED WARRANTY WITH
NO MILEAGE LIMITATION


1

YEAR COACH
ROADSIDE SERVICE

∞

ONGOING
CUSTOMER SUPPORT

FOR SALES CALL 256-356-8661 AND PARTS & SERVICE CALL 256-356-0261 OR VISIT TIFFINMOTORHOMES.COM

105 2ND ST NW RED BAY, AL 35582  



TIFFIN

MOTORHOMES

All trademarks and logos are owned or used under license by Tiffin Motor Homes, Inc. and include, but are not limited to: TIFFIN®, MANY ADVENTURES, ONE DREAM™, ALLEGRO®, ALLEGRO BREEZE®, ALLEGRO RED®, PHAETON®, ALLEGRO BUS®, ZEPHYR®, WAYFARER®, ROUGHING IT SMOOTHLY®, OPEN ROAD®, BYWAY™, and associated logos and emblems. Unauthorized use of any trademark of Tiffin Motor Homes, Inc. is strictly prohibited.

© Copyright 2025 Tiffin Motor Homes, Inc.

For all information concerning the limited warranty provided by Tiffin, please refer to the full written limited warranty set forth on the Tiffin website or held by our authorized dealerships.

Please note, some interior furnishings not included. Revised: 2/25/25

LaMESA REC VAN

LaMesaRV.com
800-496-8778